



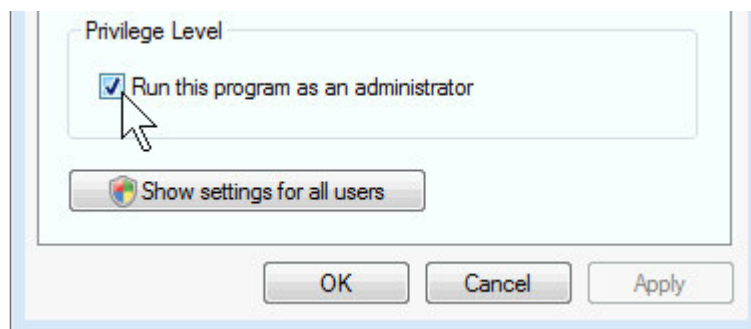
## Secure-ISS Explorer and Windows Vista

**Q: I run Windows Vista and receive numerous exception messages from Secure-ISS Explorer. The messages state that Secure-ISS Explorer doesn't have access to write various files. What is happening and how can I correct this?**

Depending on your access level within Windows Vista (administrator or user) Secure-ISS Explorer may experience difficulties running. **Prior to Secure-ISS Explorer Version 1.2** if your account doesn't run as an administrator under Windows Vista you will need to set Secure-ISS Explorer to run with these privileges.

To change the settings that the Secure-ISS Explorer application runs under, follow these steps:

1. Click the "Start" button, navigate to "Programs", navigate to "Secure-ISS";
2. Right-click on the entry "Secure-ISS Explorer", and then click **Properties**;
3. Click the **Compatibility** tab;



4. Select the **Run this program as an administrator** checkbox, and then click **OK**.

Every time you run the program in the future, User Account Control (UAC) will automatically prompt you to run Secure-ISS Explorer with elevated privileges.

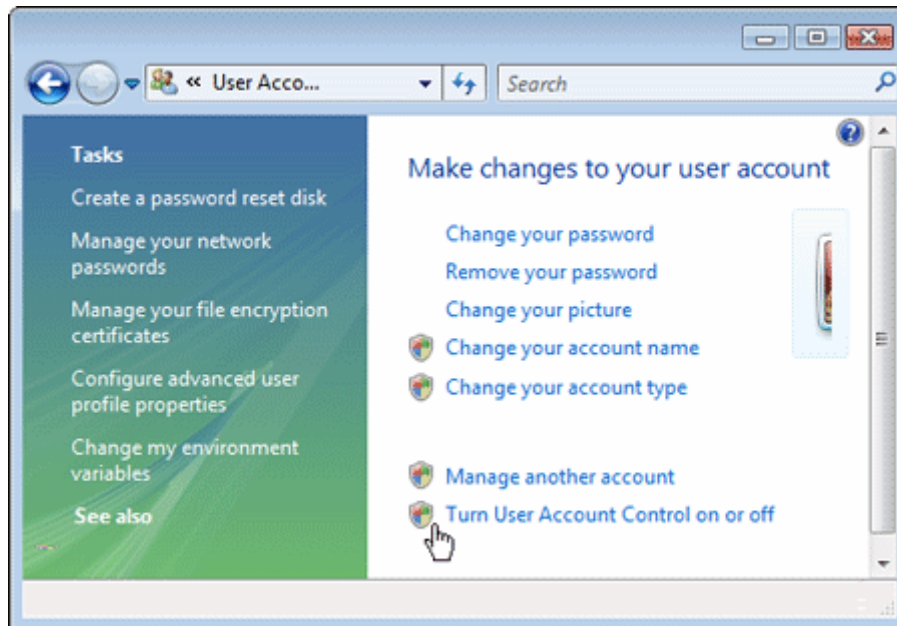
If this becomes somewhat laborious you can disable the UAC under Windows Vista. Note that UAC is there to protect your computer against spyware and some viruses. If you disable this ensure that the remainder of your system is protected with third party protection software. Secure-ISS does not recommend nor advise that you turn this feature off. It is at the user's sole decision and discretion to do so.



## Disabling UAC under Windows Vista

The following steps disable UAC under Windows Vista.

1. Click “Start” button, and then click “Control Panel”;
2. In Control Panel, click “User Accounts And Family Safety”;
3. Click “User Accounts”;



4. Click “Turn User Account Control On Or Off” (The link appears on a single user’s Control Panel page note that it will affect all users);
5. Clear the “Use User Account Control (UAC) To Help Protect Your Computer” checkbox, and then click “OK”;
6. When prompted, restart your computer.

### **Q: I run Microsoft Vista, and Secure-ISS Explorer is not appearing in my task tray? What is happening and how can I fix this?**

Depending on your access level within Windows Vista (administrator or user) Secure-ISS Explorer may not be starting-up when you boot your computer.

**Prior to Secure-ISS Explorer Version 1.2** if your account doesn’t run as an administrator under Windows Vista you may find that it hasn’t been attached to your “Start Menu” (which allows the program to start with your computer).

To correct this problem follow these steps:

1. Click the “Start” button, navigate to “Programs”, navigate to “Secure-ISS”;
2. Right-click on the entry “Secure-ISS Explorer”, and then click “Pin to Start Menu”;

Secure-ISS Explorer will load automatically when you restart your computer.